

Simplify the following radicals.

1.) $\sqrt{88}$

2. $3\sqrt{20}$

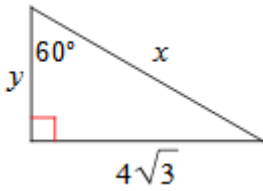
3. $2\sqrt{6}\cdot\sqrt{3}$

4. $(2\sqrt{7})^2$

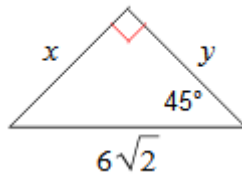
5. $\frac{18}{\sqrt{3}}$

Solve for the missing variable(s). All answers should be in simplified radical form.

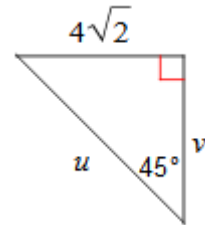
6.



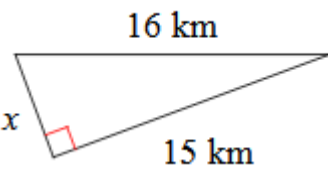
7.



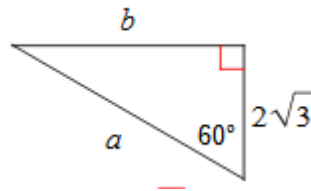
8.



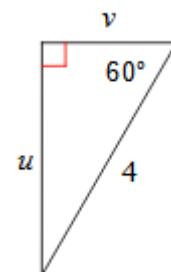
9.



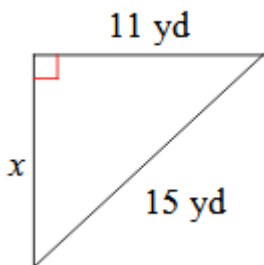
10.



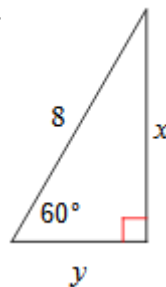
11.



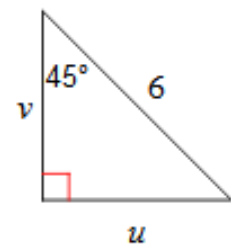
12.



13.



14.



State whether the three numbers represent a triangle. If so, determine if the triangle is acute, right, or obtuse.

15. 4, 5, 8

16. $3\sqrt{5}$, 9, 10

17. 7, 24, 25

18. 7, 7, 14